



MAINGUARD #95WM SAMPLING STATION

**PATENTED
#9927277**

Features:

- Type I extruded PVC body
- Copper horns with brass meter nuts
- Rotatable horns allow for different angled installations
- Removable horns allow for easy replacement
- All stainless steel threaded sampling point
- All brass spacing idler standard (optional brass dual check valve)
- Isolation shut-off maintenance valve



Size: 5/8" x 3/4"

MAINGUARD™



Certified to
NSF/ANSI 372

30-Day Pilot Program Available



3/4" threaded sampling point for easy connection and elimination of leaking as with quick disconnect models



1" version also available



Sampling Rod & Case Sold Separately



Protective cap keeps sampling tap clean



As shown with #95WM installed in setter with meter reset



Removable horns fit securely into water tight triple O-ring slip joint

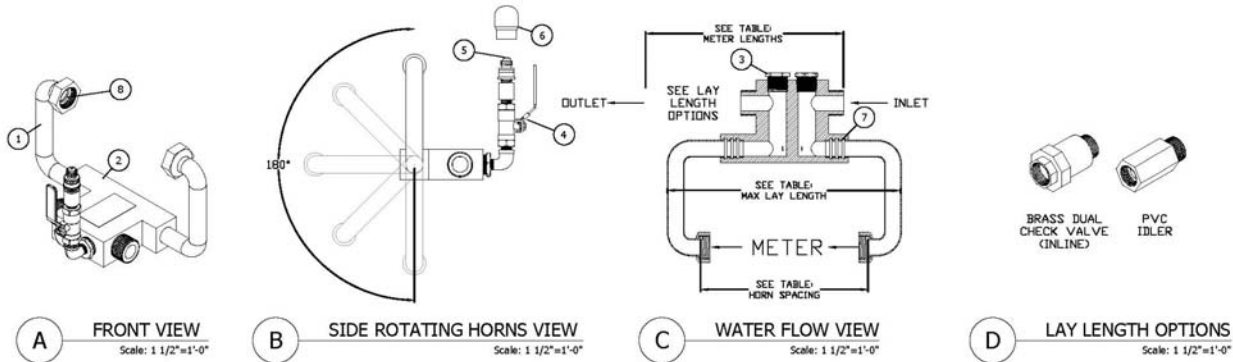


Horns not only adjust but can be locked into place

1-800-231-3990 / www.hydrants.com

2511 North 9th Street | St. Louis, MO 63102

#95WM METER RESETTER SAMPLING STATION SPEC SHEET



#95WM-xxx Meter (") Resetter Sampling Station Spec Sheet shall be installed in the following location(s):

Meter Resetter Sampling Station shall be meter box retrofit style for a (see table under meters) meter, with (see table under threads) threaded inlet and outlet, both with a face for gasket seal. If desired a dual check valve (brass body) shall be located between the water meter and residence.

Meter setter shall have removable horns that attach to the resetter body via a 3 o-ring slip connection. The meter itself shall hold the horns into the body once installed.

Meter shall be able to be rotated around the horn axis allowing the setter to accommodate for different angles as needed.

To perform sampling, a portable rod with a female coupler will thread onto the s.s. male spring loaded piston valve (#5) connected to the meter setter. This connection shall require a turning motion only, with no pushing or pulling necessary. Male valve shall be located before the water meter, have an auxiliary shut-off valve, and be protected by a PVC or brass cover when not in use.

Unit model # shall be 95WM-XXX-X-X as specified in the product ordering guide as manufactured by Kupferle Foundry Company, St. Louis MO, or approved equal.

ITEM	DESCRIPTION
1	COPPER HORN FLANGE x SLIP
2	95WM BODY (METER x SLIP)
3	S.S. PLUG
4	3/8" LOCKABLE BALL VALVE
5	S.S. MALE SPRING LOADED SAMPLING VALVE
6	PVC COVER WITH CAP
7	O-RING SLIP JOINT
8	EPDM RUBBER METER GASKET

DIMENSION REFERENCE TABLE						
METERS	MAX LAY LENGTH	METER LENGTH	HORN SPACING	THREADS	GASKET	
3/8" x 3/4"	1'-0 1/2"	7-1/2"	7-3/4"	1" NPS	3/4"	
1"	1'-3"	10-3/4"	11"	1-1/4" NPS	1"	

RESETTER PRODUCT ORDERING GUIDE							
MODEL #	95WM	-	XXX	-	S	-	N
SUBSECTION	1	2	3	4	5	6	7
SUBSECTION DESCRIPTION	MODEL #	OPTIONS		DESCRIPTIONS			
MODEL	1	95WM	PVC RESETTER				
SIZE	2	ONE	1" METER				
		FXT	3/8" x 3/4" METER				
		S	STANDARD SAMPLING ASSEMBLY				
SAMPLING OPTIONS	3	N	NONE (RESETTER CONFIGURATION)				
		N	NONE				
LAY LENGTH OPTIONS	4	BD	BRASS DUAL CHECK VALVE (ONLINE)				
		BI	BRASS IDLER				
		PI	PVC IDLER				

01/24/19	ISSUED FOR REFERENCE	MAXIMUM WORKING WATER PRESSURE: 175 PSI TEMPERATURE RANGE: 32°F TO 140°F
DATE	STATUS / REVISION	NOTE: USE ONLY APPROVED SEALANTS. IMPROPER SEALANTS MAY CAUSE BRITTLENESS

#95WM-XXX-X-X SAMPLING STATION

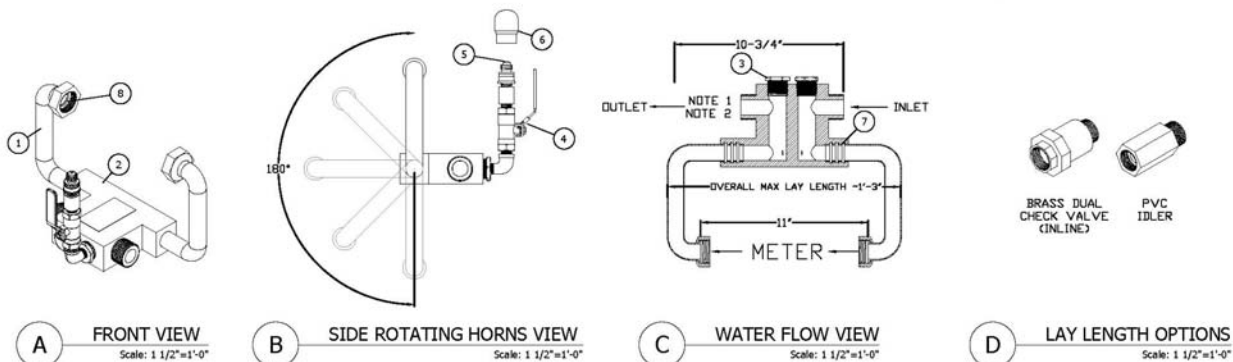
INITIALS	DATE
DRAWN MAM	01/24/19
APPROVED DCL	01/22/19
MODIFIED	
SHEET SIZE	SCALE
A (11x8.5)	1-1/2"=1'



2511 NORTH 9TH STREET
ST. LOUIS, MO 63102
1-800-231-3990
FAX 314-231-2820
www.hydrants.com

SHEET 1 OF 1

#95WM -ONE METER (1") RESETTER SAMPLING STATION SPEC SHEET



#95WM-1 Meter (1") Resetter Sampling Station Spec Sheet shall be installed in the following location(s):

Meter Resetter Sampling Station shall be meter box retrofit style for a 1" meter, with 1-1/4" NPS threaded inlet and outlet, both with a face for gasket seal. If desired a dual check valve (brass body) shall be located between the water meter and residence.

Meter setter shall have removable horns that attach to the resetter body via a 3 o-ring slip connection. The meter itself shall hold the horns into the body once installed.

Meter shall be able to be rotated around the horn axis allowing the setter to accommodate for different angles as needed.

To perform sampling, a portable rod with a female coupler will thread onto the s.s. male spring loaded piston valve (#5) connected to the meter setter. This connection shall require a turning motion only, with no pushing or pulling necessary. Male valve shall be located before the water meter, have an auxiliary shut-off valve, and be protected by a PVC or brass cover when not in use.

Unit model # shall be 95WM-ONE-X-X as specified in the product ordering guide as manufactured by Kupferle Foundry Company, St. Louis MO, or approved equal.

ITEM	DESCRIPTION
1	1" COPPER HORN FLANGE x SLIP
2	95WM BODY (1" METER x SLIP)
3	S.S. PLUG
4	3/8" LOCKABLE BALL VALVE
5	S.S. MALE SPRING LOADED SAMPLING VALVE
6	PVC COVER WITH CAP
7	O-RING SLIP JOINT
8	1" EPDM RUBBER METER GASKET

RESETTER PRODUCT ORDERING GUIDE							
MODEL #	95WM	-	ONE	-	S	-	N
SUBSECTION	1	2	3	4	5	6	7
SUBSECTION DESCRIPTION	MODEL #	OPTIONS		DESCRIPTIONS			
MODEL	1	95WM	PVC RESETTER				
SIZE	2	ONE	1" METER				
		FXT	3/8" x 3/4" METER				
		S	STANDARD SAMPLING ASSEMBLY				
SAMPLING OPTIONS	3	N	NONE (RESETTER CONFIGURATION)				
		N	NONE				
LAY LENGTH OPTIONS	4	BD	BRASS DUAL CHECK VALVE (ONLINE)				
		BI	BRASS IDLER				
		PI	PVC IDLER				

01/21/19	ISSUED FOR REFERENCE	MAXIMUM WORKING WATER PRESSURE: 175 PSI TEMPERATURE RANGE: 32°F TO 140°F
DATE	STATUS / REVISION	NOTE: USE ONLY APPROVED SEALANTS. IMPROPER SEALANTS MAY CAUSE BRITTLENESS

#95WM-ONE SAMPLING STATION

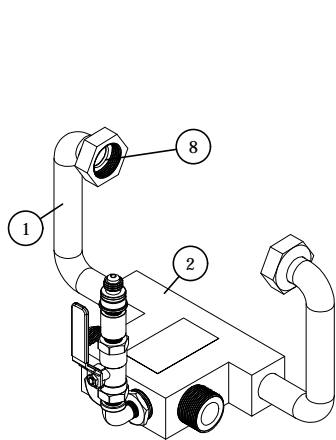
INITIALS	DATE
DRAWN MAM	01/21/19
APPROVED DCL	01/22/19
MODIFIED	
SHEET SIZE	SCALE
A (11x8.5)	1-1/2"=1'



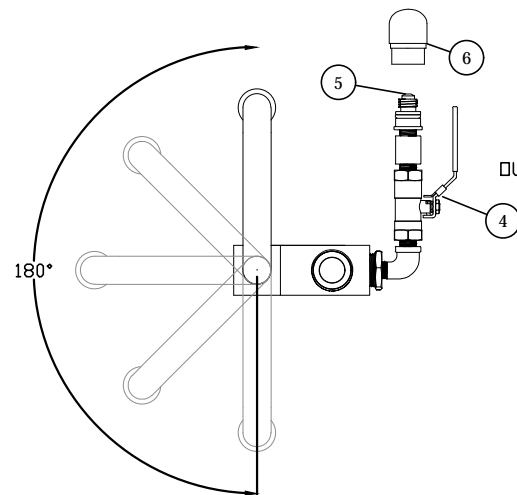
2511 NORTH 9TH STREET
ST. LOUIS, MO 63102
1-800-231-3990
FAX 314-231-2820
www.hydrants.com

SHEET 1 OF 1

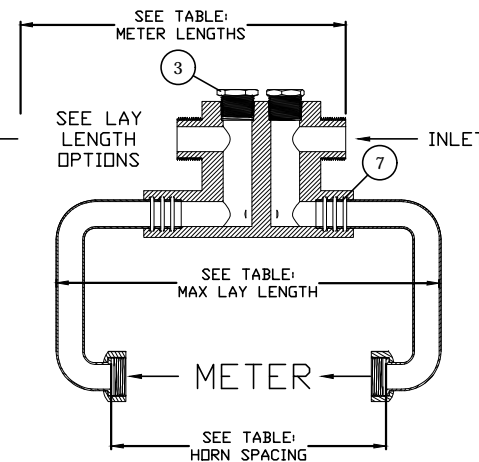
#95WM METER RESETTER SAMPLING STATION SPEC SHEET



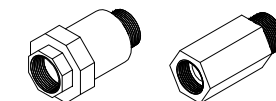
A FRONT VIEW
Scale: 1 1/2"=1'-0"



B SIDE ROTATING HORNS VIEW
Scale: 1 1/2"=1'-0"



C WATER FLOW VIEW
Scale: 1 1/2"=1'-0"



BRASS DUAL CHECK VALVE (INLINE)
PVC IDLER

D LAY LENGTH OPTIONS
Scale: 1 1/2"=1'-0"

#95WM-xxx Meter (___") Resetter Sampling Station Spec Sheet shall be installed in the following location(s):

Meter Resetter Sampling Station shall be meter box retrofit style for a (see table under meters) meter, with (see table under threads) threaded inlet and outlet, both with a face for gasket seal. If desired a dual check valve (brass body) shall be located between the water meter and residence.

Meter setter shall have removable horns that attach to the resetter body via a 3 o-ring slip connection. The meter itself shall hold the horns into the body once installed.

Meter shall be able to be rotated around the horn axis allowing the setter to accommodate for different angles as needed.

To perform sampling, a portable rod with a female coupler will thread onto the s.s. male spring loaded piston valve (#5) connected to the meter setter. This connection shall require a turning motion only, with no pushing or pulling necessary. Male valve shall be located before the water meter, have an auxiliary shut-off valve, and be protected by a PVC or brass cover when not in use.

Unit model # shall be 95WM-XXX-X-X as specified in the product ordering guide as manufactured by Kupferle Foundry Company, St. Louis MO, or approved equal.

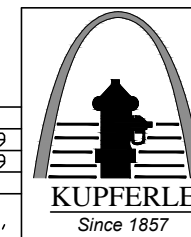
ITEM	DESCRIPTION
1	COPPER HORN (FLANGE x SLIP)
2	95WM BODY (METER x SLIP)
3	S.S. PLUG
4	3/8" LOCKABLE BALL VALVE
5	S.S. MALE SPRING LOADED SAMPLING VALVE
6	PVC COVER WITH CAP
7	O-RING SLIP JOINT
8	EPDM RUBBER METER GASKET

DIMENSION REFERENCE TABLE					
METERS	MAX LAY LENGTH	METER LENGTH	HORN SPACING	THREADS	GASKET
5/8" x 3/4"	1'-0 1/2"	7-1/2"	7-3/4"	1" NPS	3/4"
1"	1'-3"	10-3/4"	11"	1-1/4" NPS	1"

RESETTER PRODUCT ORDERING GUIDE									
MODEL #	95WM	-	XXX	-	S	-	N		
SUBSECTION	1		2		3		4		
SUBSECTION DESCRIPTION	MODEL # SUBSECTION	OPTIONS	DESCRIPTIONS						
MODEL	1	95WM	PVC RESETTER						
SIZE	2	DNE	1" METER						
SAMPLING OPTIONS	3	FxT	5/8" x 3/4" METER						
		S	STANDARD SAMPLING ASSEMBLY						
LAY LENGTH OPTIONS	4	N	NONE (RESETTER CONFIGURATION)						
		BD	BRASS DUAL CHECK VALVE (INLINE)						
		BI	BRASS IDLER						
		PI	PVC IDLER						

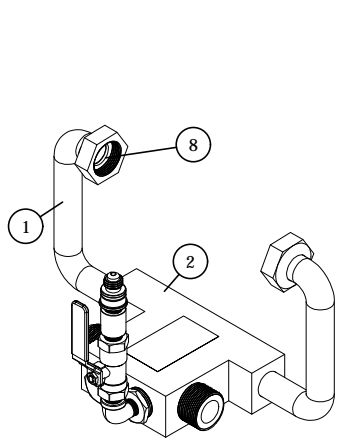
		MAXIMUM WORKING WATER PRESSURE: 175 PSI
		TEMPERATURE RANGE: 32° TO 140°F
01/24/19	ISSUED FOR REFERENCE	NOTE: USE ONLY APPROVED SEALANTS. IMPROPER SEALANTS MAY CAUSE BRITTLENESS
DATE	STATUS / REVISION	

	INITIALS	DATE
DRAWN	MAM	01/24/19
APPROVED	DCL	01/22/19
MODIFIED		
	SHEET SIZE	SCALE
	A (11x8.5)	1-1/2"=1'

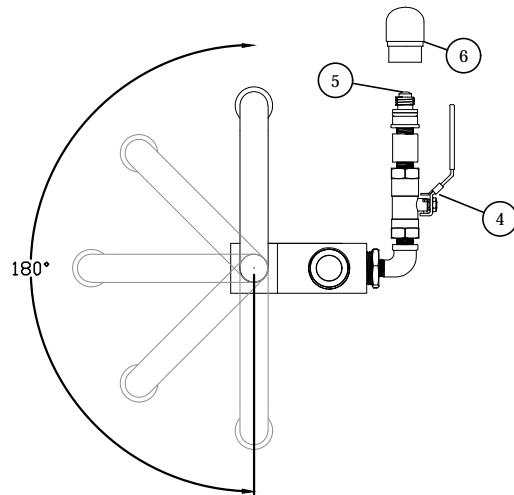


2511 NORTH 9TH STREET
ST. LOUIS, MO 63102
1-800-231-3990
FAX 314-231-2820
www.hydrants.com

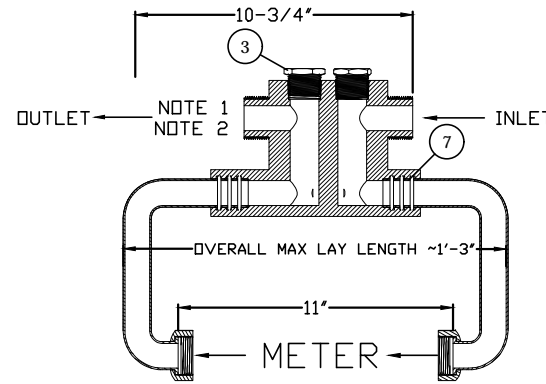
#95WM -ONE METER (1") RESETTER SAMPLING STATION SPEC SHEET



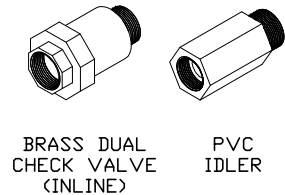
A FRONT VIEW
Scale: 1 1/2"=1'-0"



B SIDE ROTATING HORNS VIEW
Scale: 1 1/2"=1'-0"



C WATER FLOW VIEW
Scale: 1 1/2"=1'-0"



D LAY LENGTH OPTIONS
Scale: 1 1/2"=1'-0"

#95WM-1 Meter (1") Resetter Sampling Station Spec Sheet shall be installed in the following location(s):

Meter Resetter Sampling Station shall be meter box retrofit style for a 1" meter, with 1-1/4" NPS threaded inlet and outlet, both with a face for gasket seal. If desired a dual check valve (brass body) shall be located between the water meter and residence.

Meter setter shall have removable horns that attach to the resetter body via a 3 o-ring slip connection. The meter itself shall hold the horns into the body once installed.

Meter shall be able to be rotated around the horn axis allowing the setter to accommodate for different angles as needed.

To perform sampling, a portable rod with a female coupler will thread onto the s.s. male spring loaded piston valve (#5) connected to the meter setter. This connection shall require a turning motion only, with no pushing or pulling necessary. Male valve shall be located before the water meter, have an auxiliary shut-off valve, and be protected by a PVC or brass cover when not in use.

Unit model # shall be 95WM-ONE-X-X as specified in the product ordering guide as manufactured by Kupferle Foundry Company, St. Louis MO, or approved equal.

ITEM	DESCRIPTION
1	1" COPPER HORN (FLANGE x SLIP)
2	95WM BODY (1" METER x SLIP)
3	S.S. PLUG
4	3/8" LOCKABLE BALL VALVE
5	S.S. MALE SPRING LOADED SAMPLING VALVE
6	PVC COVER WITH CAP
7	O-RING SLIP JOINT
8	1" EPDM RUBBER METER GASKET

RESETTER PRODUCT ORDERING GUIDE									
MODEL#	95WM	-	ONE	-	S	-	N		
SUBSECTION	1		2		3		4		
SUBSECTION DESCRIPTION	MODEL # SUBSECTION	OPTIONS		DESCRIPTIONS					
MODEL	1	95WM		PVC RESETTER					
SIZE	2	ONE		1" METER					
SAMPLING OPTIONS	3	FXT		5/8" x 3/4" METER					
		S		STANDARD SAMPLING ASSEMBLY					
		N		NONE (RESETTER CONFIGURATION)					
LAY LENGTH OPTIONS	4	BD		BRASS DUAL CHECK VALVE (INLINE)					
		BI		BRASS IDLER					
		PI		PVC IDLER					

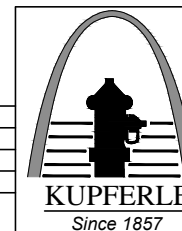
NOTES:

- THE DUAL CHECK VALVE:
 - A.Y. McDONALD (BRASS) DUAL CHECK MANUFACTURED IN COMPLIANCE WITH ANSI/ASSE 1024 AND COMPLIANT WITH USA PUBLIC LAW 111-380 AND IDENTIFIED WITH "NL".
- IDLER OPTIONAL WITH DIFFERENT BODY STYLES AVAILABLE (PVC OR BRASS):
 - KUPFERLE (PVC) IDLER
 - A.Y. McDONALD (BRASS) IDLER COMPLIANT WITH USA PUBLIC LAW 111-380 AND IDENTIFIED WITH "NL".

		MAXIMUM WORKING WATER PRESSURE: 175 PSI
		TEMPERATURE RANGE: 32° TO 140°F
01/21/19	ISSUED FOR REFERENCE	NOTE: USE ONLY APPROVED SEALANTS. IMPROPER SEALANTS MAY CAUSE BRITTLENESS
DATE	STATUS / REVISION	

#95WM-ONE SAMPLING STATION

	INITIALS	DATE
DRAWN	MAM	01/21/19
APPROVED	DCL	01/22/19
MODIFIED		
SHEET SIZE	SCALE	
A (11x8.5)	1-1/2"=1'	



2511 NORTH 9TH STREET
ST. LOUIS, MO 63102
1-800-231-3990
FAX 314-231-2820
www.hydrants.com