

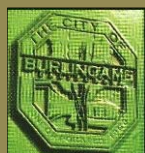
ECLIPSE™

#88 Sampling Station

- Allows for safe, secure, quality samples
- 100% serviceable from above ground – no digging!
- Unthreaded nozzle
- Lockable cast-aluminum enclosure
- All brass waterway



- No drain hole to prevent cross-contamination
- 3/4" inlet
- O-ring valve design
- Any depth of bury
- Freeze-proof (with use of hand pump and built-in evacuation line during freezing seasons)



Optional Casted Door Logo



Protective Caps On All Outlets



Evacuation Hand Pump (sold separately)



Optional Pedestal



Revised Total Coliform Rule

The EPA allows for collection of samples from sampling stations for the following benefits:

- To reduce potential contamination of the sampling taps
- To facilitate access to sampling taps
- To improve sampling representation of the distribution system



Eclipse #88-SS Stainless Steel Model Also Available



Meets the Requirements of NSF/ANSI 372



Optional Plastic Enclosure



All About Kupferle

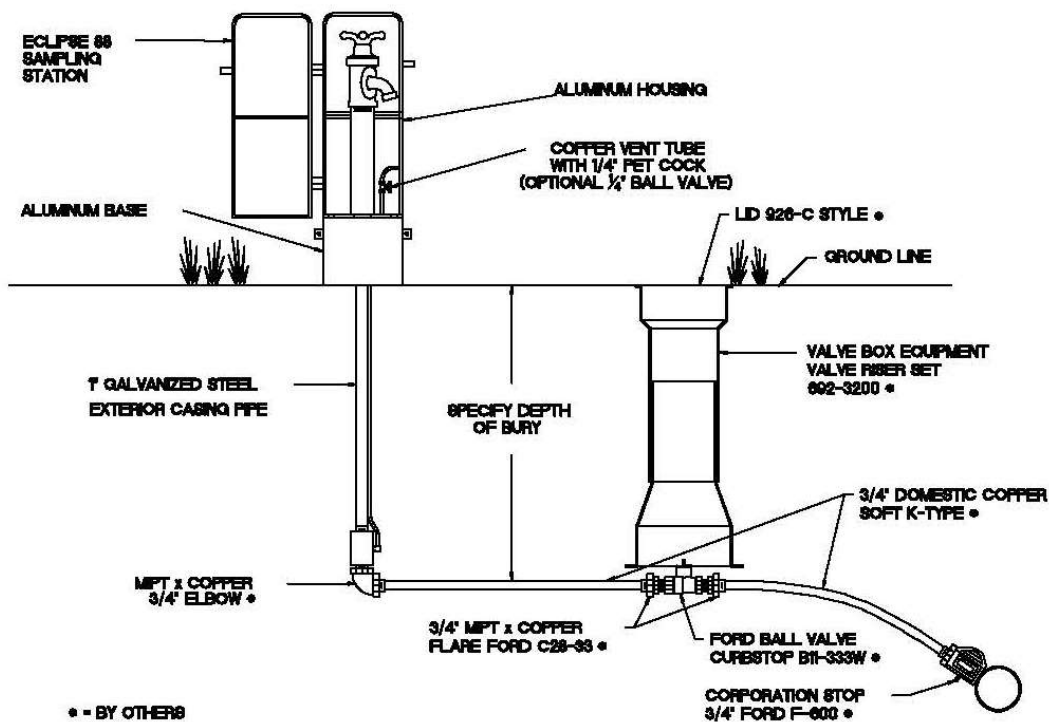
2511 North 9th Street, St. Louis, MO 63102



youtube.com/kupferle1857

www.hydrants.com / 800-231-3990

ECLIPSE NO. #88 SAMPLING STATION



Sampling Stations shall be ' bury, with a 3/4' FIP inlet, and a (3/4' hose or unthreaded) nozzle.

All stations shall be enclosed in a lockable, nonremovable, aluminum-cast housing.

When opened, the station shall require no key for operation, and the water will flow in an all brass waterway.

All working parts will also be of brass and be removable from above ground with no digging. Exterior piping shall be brass or galvanized.

A copper vent tube will enable each station to be pumped free of standing water to prevent freezing and to minimize bacteria growth.

Eclipse No. #88 Sampling Station shall be manufactured by Kupferle Foundry, St. Louis, MO 63102.

DRAWN
F.M.
APPROVED

DATE
11-07-12
MAT'L

THIS DRAWING IS THE PROPERTY OF THE KUPFERLE FOUNDRY COMPANY. IT IS NOT TO BE USED OR DUPLICATED WITHOUT PERMISSION OF THE OWNER.

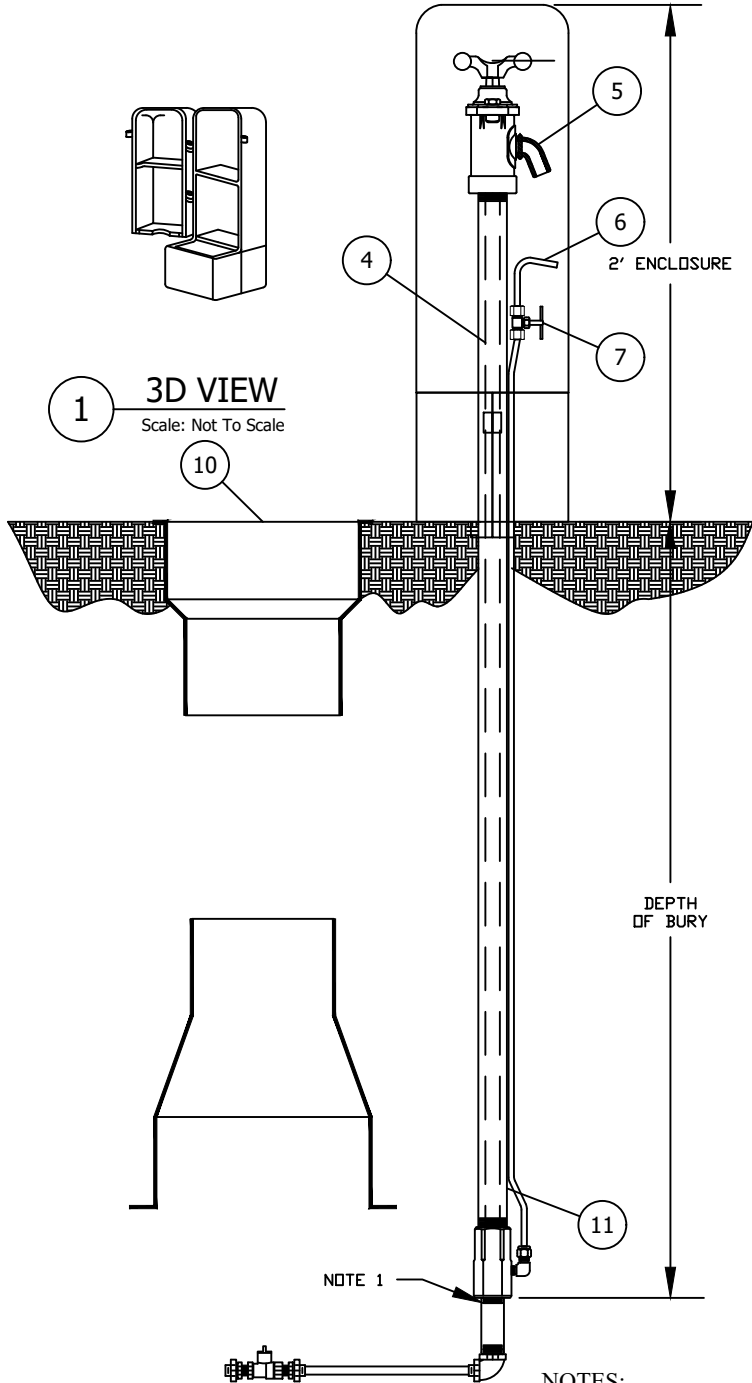
ECLIPSE
Since 1867

KUPFERLE FOUNDRY COMPANY

2511 NORTH 9TH STREET, ST. LOUIS, MO 63102
314-231-8738 800-231-3990 FAX 314-231-2820
<http://www.hydrants.com>

DATE	REVISION

#88 SAMPLING STATION SPEC SHEET



1 3D VIEW
Scale: Not To Scale

2 ENCLOSURE OPEN VIEW
Scale: 3/4"=1'-0"

SAMPLING STATION SHALL BE _____' BURY, WITH A 3/4" FIP INLET, AND 1/2" UNTHREADED BLOW OFF AND SAMPLING BIBB.

STATION SHALL BE ENCLOSED IN A LOCKABLE, NON-REMOVABLE ALUMINUM BOX WITH HINGED OPENINGS.

WHEN OPEN, THE STATION SHALL REQUIRE NO KEY FOR OPERATION, AND ALL WATER FLOW SHALL PASS THRU AN ALL STAINLESS STEEL WATERWAY.

ALL WORKING PARTS SHALL BE SERVICABLE FROM ABOVE GROUND WITH NO DIGGING OR REPLACEMENT NEEDED.

A PET COCK WILL BE LOCATED BELOW THE SAMPLING BIBB TO ALLOW PUMPING OF ANY WATER REMAINING INSIDE THE STATION TO INSURE NON-FREEZING.

THE STATION SHALL BE MODEL #88 AS MANUFACTURED BY THE KUPFERLE FOUNDRY, ST. LOUIS MO. 63102 OR APPROVED EQUAL.

#88 SAMPLING STATION TO BE INSTALLED AT THE FOLLOWING LOCATIONS:

NOTE 1

NOTES:

ITEM	ITEM / DESCRIPTION	NOTES
1	88 FRONT DOOR (COVER A)	
2	88 REAR DOOR (COVER B)	
3	88 BASE	2 PIECES
4	3/8" S.S. WATERWAY	
5	BLOW OFF & SAMPLING BIBB	
6	1/4" COPPER TUBING	
7	PET COCK	
8	LOCKING HOLE	
9	NOT USED	
10	VALVE BOX	BY OTHERS
11	3/4" S.S. NIPPLE	BY OTHERS

1.) IN CORROSIVE SOILS THE BURIED PIPE SHOULD BE PREPPED FOR ADDITIONAL RESISTANCE TO CORROSION. KUPFERLE RECOMMENDS SPRAYING ALL UNDERGROUND PIPING AND FITTINGS WITH BITUMINOUS SPRAY TAR, ALLOWING PROPER TIME TO DRY, AND THEN WRAPPING THE PARTS

DD/MM/YY	ISSUED FOR REFERENCE	#88 SAMPLING STATION
DATE	STATUS / REVISION	

	INITIALS	DATE
DRAWN	BAM	4/29/15
APPROVED	DCL	4/29/15
MODIFIED		

SCALE
1-1/2"=1'



2511 NORTH 9TH STREET
ST. LOUIS, MO 63102
1-800-231-3990
FAX 314-231-2820
www.hydrants.com

#88 CUT SHEET

PARTS LIST

ITEM	QTY	PART NUMBER	DESCRIPTION	NOTES
1	1	124	3/4" IRON TOP CAP	C
2	1	134	IRON HANDLE	C
3	1	137	BRASS OPERATING SCREW	C
4	4.09	1GAL	1" GALVANIZED PIPE	B,C
5	4.24	3/8SSP	3/8" 316 S.S. PIPE	B,C
6	2	311-SS	PLUNGER NUT	
7	1	322	3/4" SLIDE	C
8	2	344-B	S.S. TOP CAP BOLT	C
9	2	344-N	TOP CAP NUT	C
10	1	418-B	BEVELED SEAT WASHER	C
11	1	88-10	S.S. VALVE BODY	C
12	1	88-13	S.S. PLUNGER	
13	10	88-14	ENCLOSURE FLAT WASHER	
14	2	88-15	3° WEDGE WASHER	
15	1	88-17	HOSE CLAMP	
16	1	88-21	O-RING FOR PLUNGER	C
17	1	88-24	HANDLE WASHER	C
18	1	88-25	NOZZLE CAP	C
19	1	88-3	LOW LEAD BRASS NOZZLE	C
20	6	88-4	ENCLOSURE BOLT	
21	6	88-5	ENCLOSURE NUT	
22	2	88-6	RIVET FOR 88 COVER	C
23	3.92	88-7	1/4" COPPER TUBING	B,C
24	1	88-8	1/4" TUBE x 1/8" MIP BRASS ELBOW	C
25	1	88-9	1/4" x 1/4" COMP. BRASS NEEDLE VALVE	C
26	1	88-A	"NEW STYLE" 88 COVER "A"	C,R
27	1	88-B	"NEW STYLE" 88 COVER "B"	C,R
28	2	88-C	"NEW STLYE" 88 BASE	C,R
29	1	915	IRON NECK	C
30	1	918	LOW LEAD BRASS ELBOW	C
31	2	9419	RIVET FLAT WASHER	
32	1	9435	SAMPLING POINT COVER	A,C
33	1	9452-88	HANDLE SCREW	
34	6	9465-88	ENCLOSURE LOCK WASHER	

OPTIONAL/REPAIR PARTS LIST

35	0	1BP	1" BRASS PIPE - 4.09 FT	C
36	0	4FBE	PEDESTAL PIPE - 2.85 FT	
37	0	678	COUPLING FOR 88 PEDESTAL	C
38	0	88-22	88 ENCLOSURE GASKET	
39	0	88-23	88 PEDESTAL BOLT	C
40	0	88-26	VINYL CAP FOR THREADED NOZZLE	A,C
41	0	88-3T	BRASS THREADED NOZZLE	A,C
42	0	88-9A	1/4" LOW LEAD BRASS BALL VALVE	A,C
43	0	88-9B	1/4" COMP. x 1/4" MIP ADAPTER	A,C
44	0	88-A-LOGO	"NEW STYLE" 88 COVER "A" WITH LOGO	A,C,R
45	0	88P-1S	SMALL PUMP	A
46	0	Z88PS	LARGE PUMP	A

OLD STYLE PARTS LIST

47		418-A	BIBB WASHER	
48		88-10/OLD	STAINLESS STEEL VALVE BODY - 3/8"	A,C
49		88-11	O-RING FOR X8813-MALE (SMALL)	
50		88-12	O-RING (EXTERNAL)	C
51		88-13-FEMALE	FEMALE PLUNGER	
52		88-13-MALE	MALE PLUNGER	
53		88-13-RETRO	RETRO PLUNGER	

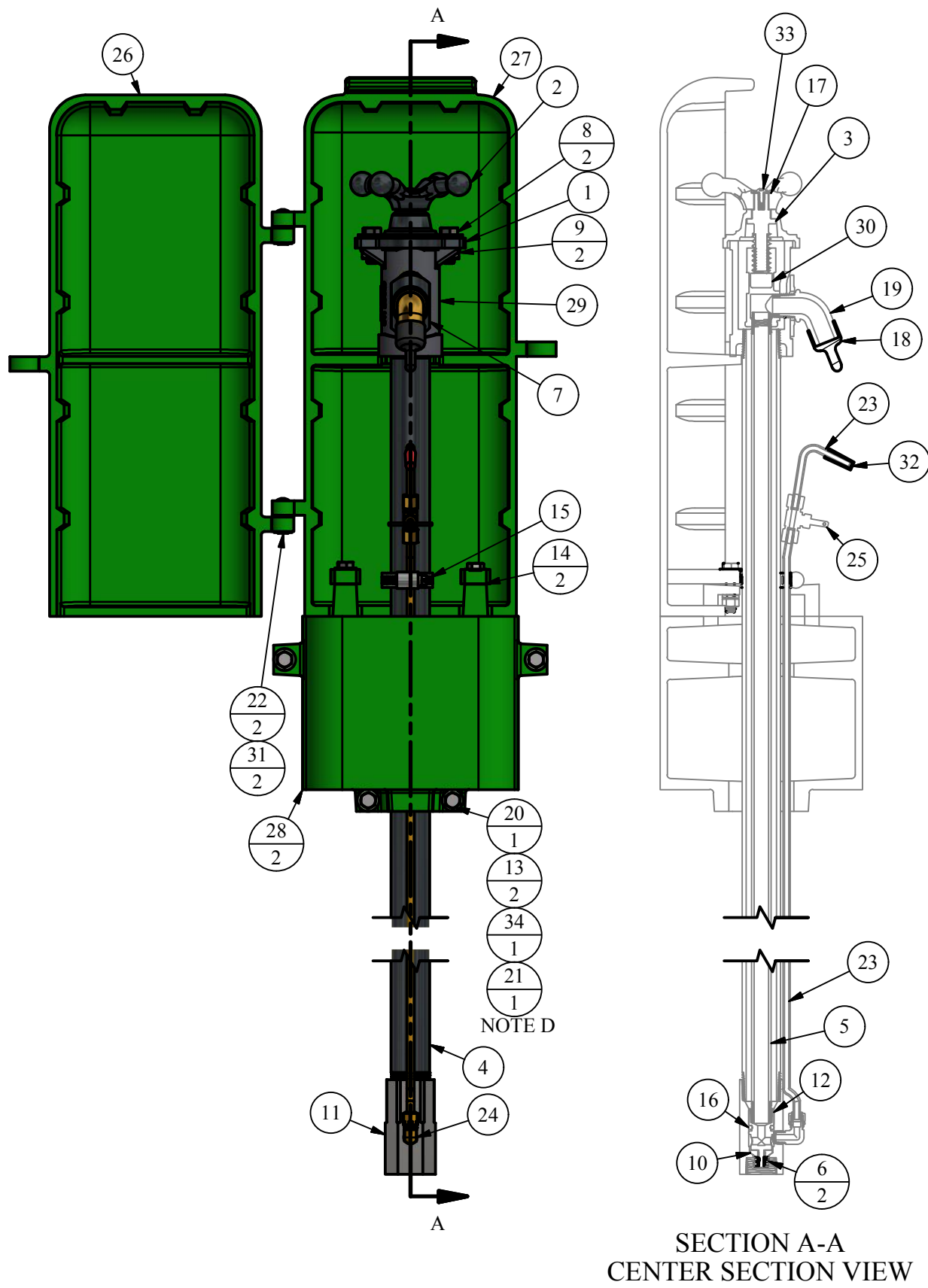
REPAIR KITS

PART NUMBER	DESCRIPTION	PARTS INCLUDED	NOTES
X130	3/4" CAP, HANDLE, SCREW	134 HANDLE (1), 9452-88 SCREW (1), 88-24 WASHER (1), 137 BRASS SCREW (1), 124 IRON CAP (1), 344-N NUT (2), 344-B BOLT (2)	
X881	ALUMINUM COVER COMPLETE	88-A FRONT COVER (1), 88-B BACK COVER (1), 88-6 RIVET (2), 9419 FLAT WASHER (2)	
X8813-NS	PLUNGER COMPLETE 3/8" FEMALE THREADS	88-13 PLUNGER (1), 88-21 O-RING (1), 418-B BEVELED WASHER (1), 311-SS NUT (2)	2012-PRESENT
X882	ALUMINUM BASE COMPLETE	88-C BASE (2), 88-4 BOLT (4), 9465-88 LOCK WASHER (4), 88-6 NUT (4), 88-14 FLAT WASHER (8)	
X883	ALUMINUM COVER AND BASE COMPLETE	88-A FRONT COVER (1), 88-B BACK COVER (1), 88-C BASE (2), 88-6 RIVET (2), 88-4 BOLT (6), 88-15 WEDGE WASHER (2), 9465-88 LOCK WASHER (6), 88-5 NUT (6), 88-14 FLAT WASHER (12), 9419 FLAT WASHER (2)	
X884	#88 REPAIR KIT	88-21 O-RING (1), 418-B BEVELED WASHER (1)	2012-PRESENT

OLD STYLE REPAIR KITS

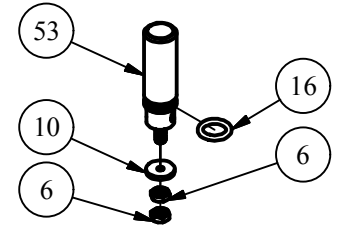
X8813-FEMALE	PLUNGER COMPLETE 3/8" FEMALE THREADS	88-13-FEMALE PLUNGER (1), 88-12 O-RING (1), 418-A FLAT WASHER (1), 418-B BEVELED WASHER (1), 311-SS NUT (2)	1996-2004
X8813-MALE	PLUNGER COMPLETE 1/4" MALE THREADS	88-13-MALE PLUNGER (1), 88-11 O-RING (1), 88-12 O-RING (1), 418-A FLAT WASHER (1), 418-B BEVELED WASHER (1), 311-SS NUT (2)	1988-1996
X8813-RETRO	PLUNGER COMPLETE TO RETROFIT	88-13-RETRO PLUNGER (1), 88-21 O-RING (1), 418-A FLAT WASHER (1), 418-B BEVELED WASHER (1), 311-SS NUT (2)	2004-2011
X884-FEMALE	#88 REPAIR KIT 3/8" FEMALE PLUNGER	88-12 O-RING (1), 418-A FLAT WASHER (1), 418-B BEVELED WASHER (1)	1996-2004
X884-MALE	#88 REPAIR KIT MALE PLUNGER	88-11 O-RING (1), 88-12 O-RING (1), 418-A FLAT WASHER (1), 418-B BEVELED WASHER (1)	1988-1996
X884-OLD	#88 REPAIR KIT 1/4" FEMALE PLUNGER	88-21 O-RING (1), 418-A FLAT WASHER (1), 418-B BEVELED WASHER (1)	2004-2011

NOTE	DESCRIPTION
A	NOT SHOWN
B	PIPE LENGTH DEPENDENT ON DEPTH OF BURY
C	SOLD AS REPLACEMENT PART
D	BOLT ASSEMBLY USED ON ALL SIMILAR HOLES/BRACKETS
R	POWDER COATING OPTIONS AVAILABLE

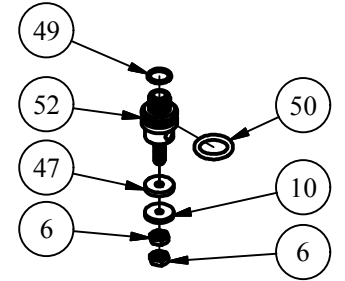


SECTION A-A
CENTER SECTION VIEW

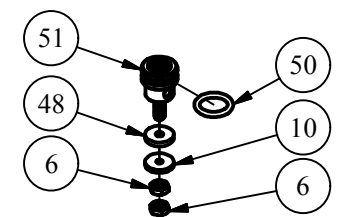
X8813-RETRO ASSEMBLY



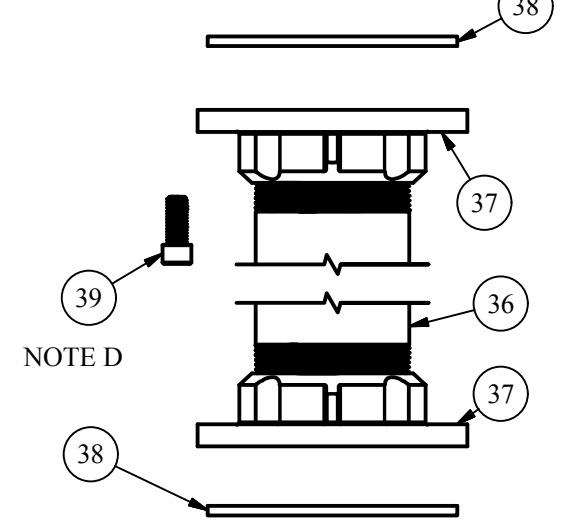
X8813-MALE ASSEMBLY



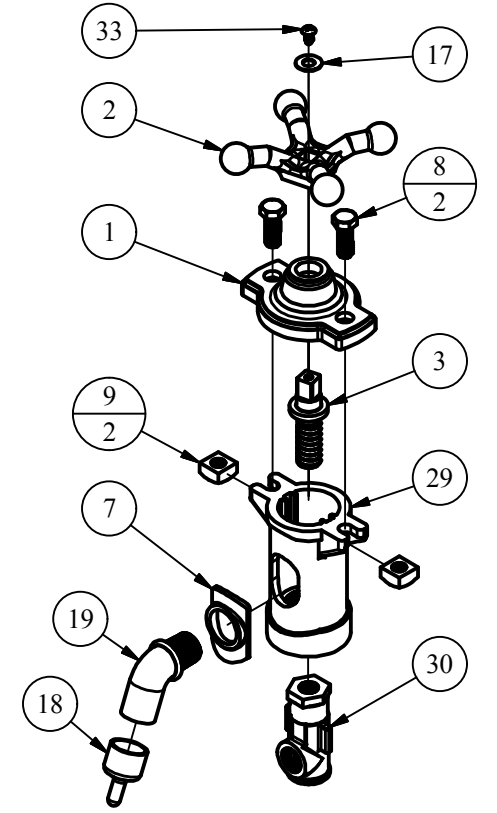
X8813-FEMALE ASSEMBLY



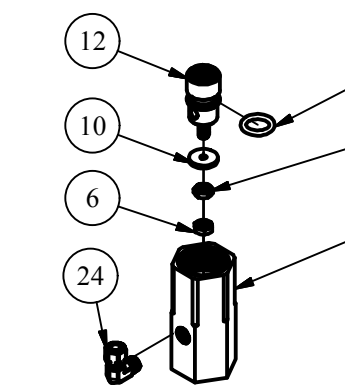
OPTIONAL PEDESTAL (3' STANDARD)



TOP STOCK ASSEMBLY



VALVE ASSEMBLY



DRAWN	SMS	8/7/2017
CHECKED	DCL	9/12/2017
MODIFIED		

SIZE	C
SCALE	1/5

DWG NO	#88 Cut_Rev0
--------	--------------



SHEET	1 OF 1
REV	0

LEGEND

(X)	STANDARD TAG
(X/Y)	TAG WITH Y QUANTITY

DISCLAIMER
THIS DRAWING IS THE PROPERTY OF THE KUPFERLE FOUNDRY COMPANY. IT IS NOT TO BE USED OR DUPLICATED WITHOUT THE PERMISSION OF THE OWNER.