

# Eclipse #88WC-SS Stainless Steel Sampling Station



- Designed for use in non-freezing warm climates
- All surgical stainless steel waterway and parts
- Lockable cast-aluminum enclosure
- 7/16" globe valve blow-off
- 1/8" globe valve sampling bibb
- Vinyl outlet caps to keep out contaminants
- Maintainable from above ground-no digging!
- Optional 3' pedestal
- Optional casted door logo

Lead-Free  
Stainless  
Steel



See Product Video at:  
[www.hydrants.com](http://www.hydrants.com)



Optional Casted  
Door Logo



Optional  
Pedestal



Close Up View



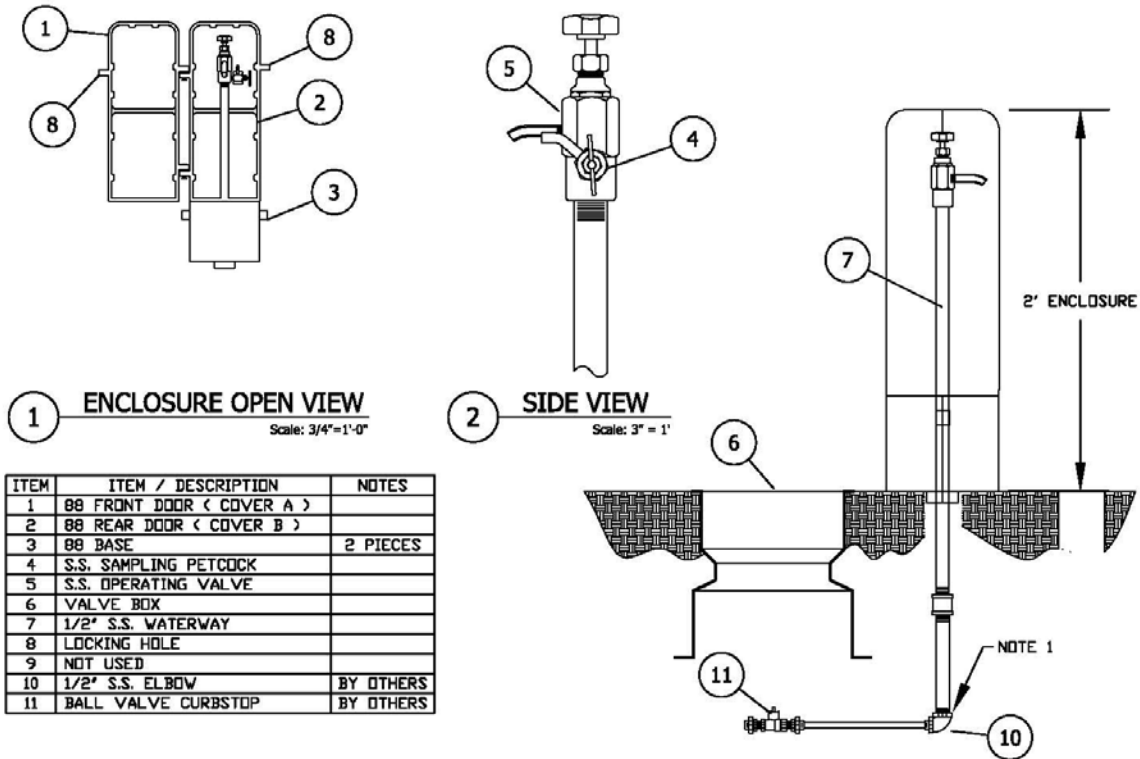
Kupferle Product Videos  
[www.youtube.com/kupferle1857](http://www.youtube.com/kupferle1857)

**ECLIPSE™**



Meets the Requirements of  
NSF/ANSI 372

## #88WC-SS SAMPLING STATION SPEC SHEET



88WC S.S. SAMPLING STATION SHALL BE STANDARD 1' BURY, WITH A 1/2" MIP INLET, AND 7/16" UNTHREADED BLOW-OFF, AND A SAMPLING BIBB.

STATION SHALL BE ENCLOSED IN A LOCKABLE, NON-REMOVABLE ALUMINUM BOX WITH HINGED OPENINGS.

THE STATION SHALL HAVE AN OPERATING VALVE THAT SHALL CONTROL THE FLOW OF WATER THRU 7/16" OUTLET, WITH 6 ROTATIONS OF THE HANDLE BEING FULLY OPEN. LOCATED BEFORE THE MAIN BLOW OFF VALVE, A SEPARATE STAINLESS STEEL GLOBE VALVE PETCOCK SHALL CONTROL THE DISCHARGE OF WATER VIA AN UNTHREADED 1/8" OUTLET TO ALLOW THE USER A DEDICATED SAMPLING POINT.

WHEN OPEN, THE STATION SHALL REQUIRE NO KEY FOR OPERATION.

ALL WORKING PARTS SHALL BE STAINLESS STEEL AND SERVICABLE FROM ABOVE GROUND WITH NO DIGGING OR REPLACEMENT NEEDED.

THE STATION SHALL BE MODEL #88WC-SS AS MANUFACTURED BY THE KUPFERLE FOUNDRY, ST. LOUIS MO. 63102 OR APPROVED EQUAL.

### NOTES:

- 1.) IN CORROSIVE SOILS THE BURIED PIPE SHOULD BE PREPPED FOR ADDITIONAL RESISTANCE TO CORROSION. KUPFERLE RECOMMENDS SPRAYING ALL UNDERGROUND PIPING AND FITTINGS WITH BITUMINOUS SPRAY TAR, ALLOWING PROPER TIME TO DRY, AND THEN WRAPPING THE PARTS.
- 2.) IN SOME CONDITIONS CORROSION OF STAINLESS STEEL CAN OCCUR (EXPOSURE TO SALT WATER, DIRECT EXPOSURE TO STRONG CHLORIDES, ETC.). PROPER MAINTENANCE OF THE EXPOSED STAINLESS STEEL PARTS USING PROPER STAINLESS STEEL CLEANING AGENTS WILL INCREASE THE LIFESPAN OF THE HYDRANT. IF DESIRED, KUPFERLE CAN ALSO OFFER AN ADDITIONAL PASSIVATION PROCESS FOR ADDITIONAL CORROSION PROTECTION.

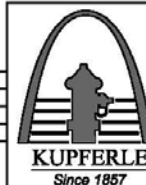
#88WC-SS SAMPLING STATION TO BE INSTALLED AT THE FOLLOWING LOCATIONS:

DD/MM/YY	ISSUED FOR REFERENCE
DATE	STATUS / REVISION

#88WC-SS SAMPLING STATION

	INITIALS	DATE
DRAWN	DCL	4/8/16
APPROVED	DCL	4/8/16
MODIFIED	n/a	n/a

SCALE  
1.2"=1'



2511 NORTH 9TH STREET  
ST. LOUIS, MO 63102  
1-800-231-3990  
FAX 314-231-2820  
www.hydrants.com

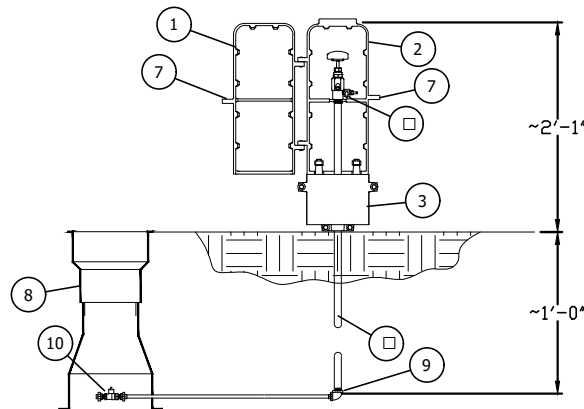
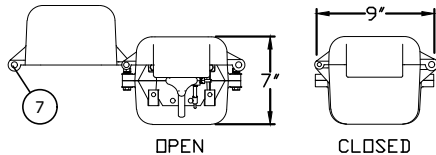
SHEET 1 OF 1



2511 North 9<sup>th</sup> St.  
St. Louis, MO 63102  
800-231-3990  
www.hydrants.com

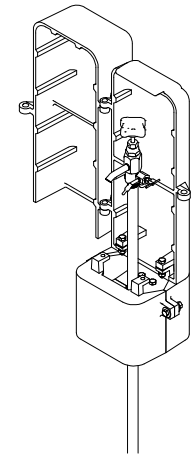
Distributed by:

A technical drawing of a vertical assembly. At the top is a circular component with a small square feature on its side, indicated by a callout line. Below this is a vertical shaft with several components. A horizontal bracket-like structure is attached to the shaft. Further down, there is a rectangular base with a small protrusion on its side. The drawing is a line drawing with no shading.



# 1 88WCSS INSTALL

ITEM	DESCRIPTION	NOTES
1	88 FRONT DOOR ( COVER A )	
2	88 REAR DOOR ( COVER B )	
3	88 BASE	2 PIECES
4	S.S. SAMPLING PETCOCK	
5	S.S. OPERATING VALVE	
6	1/2" S.S. WATERWAY	
7	LOCKING HOLE	
8	VALVE BOX	BY OTHERS
9	1/2" S.S. ELBOW	BY OTHERS
10	BALL VALVE CURBSTOP	BY OTHERS



**ISO VIEW**  
S 1111 B / 1 1 1 0"

S□□ in □□ in □□□□□□ and rd 1' □□□, □ i□□ 1/2" MIP in □□, and □ 7/16" n□□□□□  
□□□□□□ and d□□□□□□ □□ in □ i□□

Silicon is found in sand or silicon dioxide in the form of quartz in the ground.

[illegible]

When  $n$  is even,  $\mathcal{C}_n$  is a  $\mathbb{Z}_2$ -module. A  $\mathbb{Z}_2$ -module is a vector space over  $\mathbb{Z}_2$ . In this case,  $\mathcal{C}_n$  is a vector space over  $\mathbb{Z}_2$ .

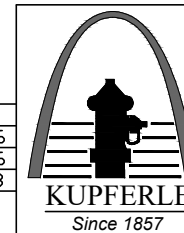
A r r d i n d r r n d d.

Taken in consideration of #88WC-SS and in order *The Kupferle Foundry Company, St. Louis MO 63102* and and.

GENERAL SPECIFICATIONS	
MAXIMUM OPERATING PRESSURE	85 PSI
STATION MATERIALS:	303, 316, & 18-8 STAINLESS STEEL
ENCLOSURE MATERIAL:	CAST AL 319 ALUMINUM
ENCLOSURE COLOR:	GREEN
WETTED MATERIALS:	BUNA-N & SBR RUBBER
DEPTH OF BURY:	1'-0"
WEIGHT:	76 LBS
CUSTOM LOGO:	

4.) IN CORROSION SOLIDS THE BURIED PIPE SHOULD BE PREPPED FOR ADDITIONAL RESISTANCE TO CORROSION. KUPFERLE RECOMMENDS SPRAYING ALL UNDERGROUND PIPING AND FITTINGS WITH BITUMINOUS SPRAY TAR, ALLOWING PROPER TIME TO DRY, AND THEN WRAPPING THE PARTS.

	INITIALS	DATE
DRAWN	DCL	04/08/10
APPROVED	DCL	04/08/10
MODIFIED	SMS	09/10/18
	SHEET SIZE: A	SCALE: VARIES



2511 NORTH 9TH STR  
ST. LOUIS, MO 63102  
1-800-231-3990  
313-231-2820  
dr

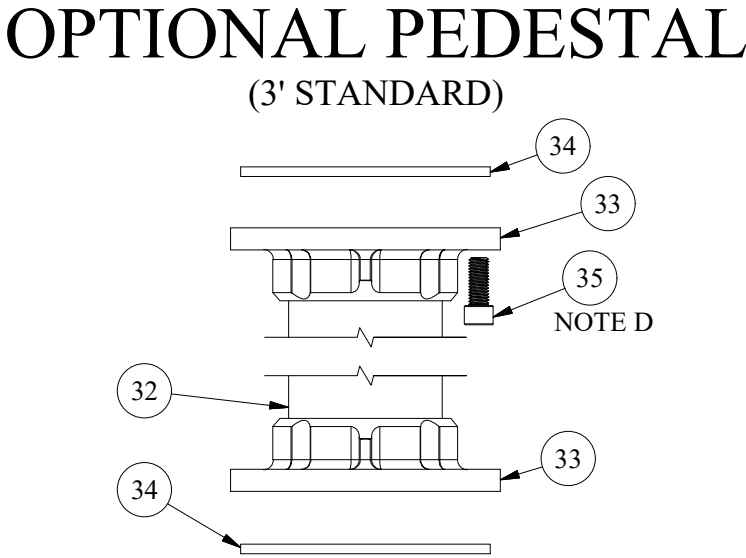
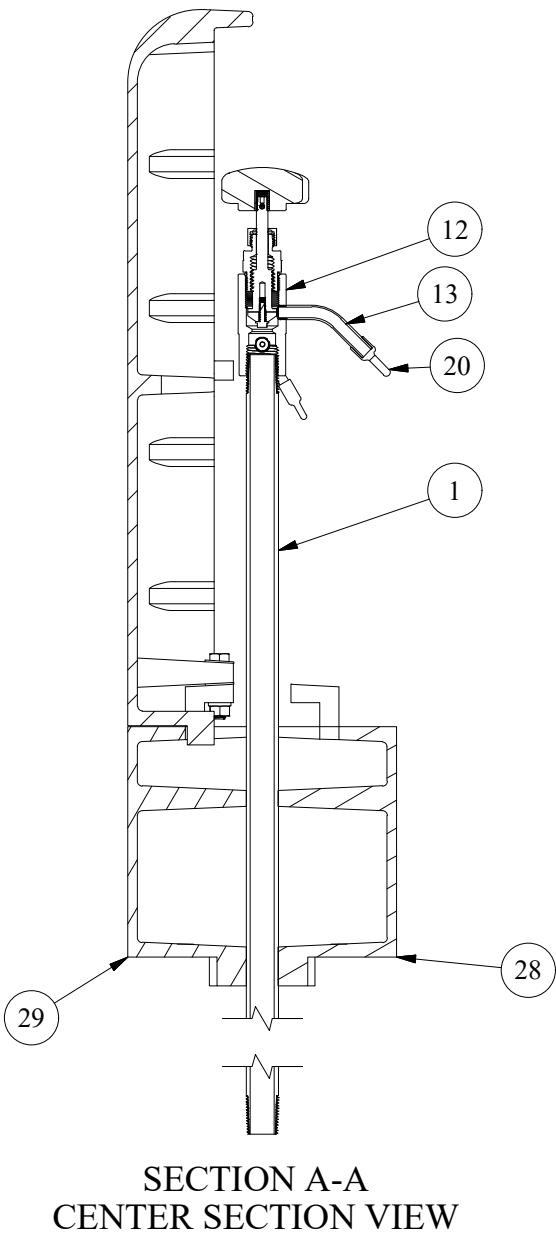
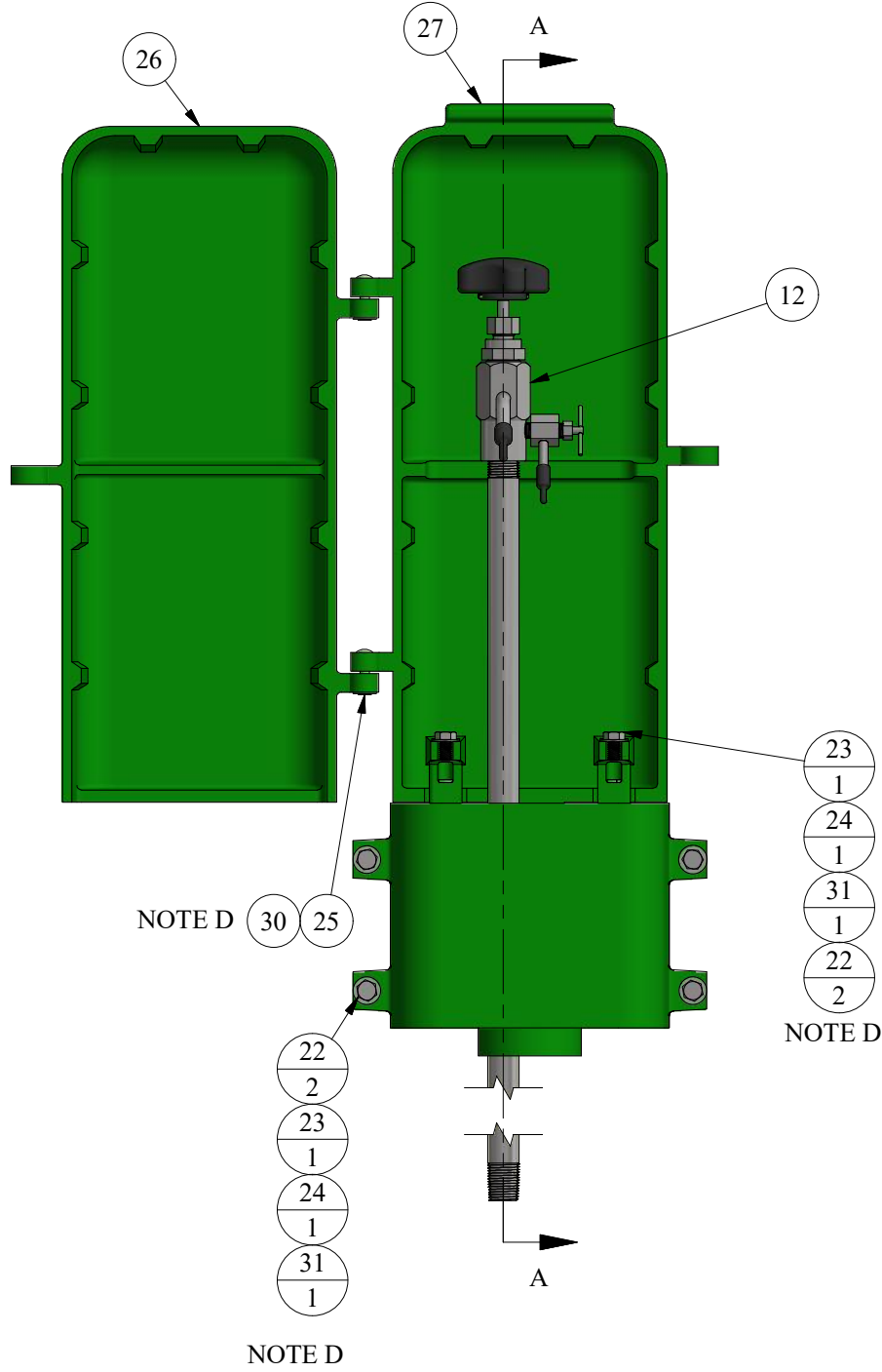


# #88WC-SS CUT SHEET

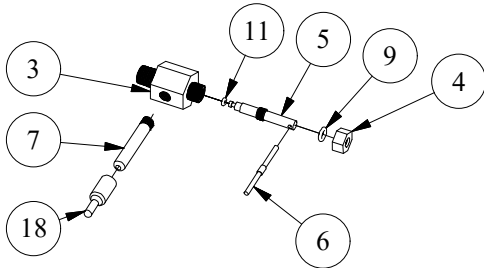
PARTS LIST				
ITEM	QTY	PART NUMBER	DESCRIPTION	NOTES
1	29.000 in	1/2SSP	1/2" S.S. PIPE	B,C
2	1	418-B	BEVELED BIBB WASHER	C
3	1	66S01	PETCOCK BODY	P
4	1	66S02	PETCOCK NUT	P
5	1	66S03	PETCOCK PLUNGER	P
6	1	66S04	HANDLE PIN	P
7	1	66S05	PETCOCK NOZZLE	P
8	1	66S07	O-RING (PACKING NUT)	
9	1	66S08	O-RING (PETCOCK NUT)	P
10	1	66S09	O-RING (STEM)	
11	1	66S10	O-RING (PETCOCK PLUNGER)	P
12	1	66S11	HEADSTOCK (WARM CLIMATE)	
13	1	66S06	NOZZLE (3/8")	C
14	1	66S13	STEM (WARM CLIMATE)	
15	1	66S14	HANDLE/KNOB PIN	C
16	1	66S15	PACKING NUT	
17	1	66S16	HEADSTOCK TOP NUT	
18	1	66S22	PETCOCK CAP	C
19	1	66S28	PLUNGER SCREW	
20	1	94-K	PLASTIC NOZZLE CAP	C
21	1	66S42	HANDLE	C
22	12	88-14	ENCLOSURE WASHER	
23	6	88-4	ENCLOSURE HEX BOLT	
24	6	88-5	ENCLOSURE HEX NUT	
25	2	88-6	RIVET FOR 88 COVER	C
26	1	88-A	"NEW STYLE" 88 COVER "A"	C,R
27	1	88-B	"NEW STLE" 88 COVER "B"	C,R
28	1	88-C1	"NEW STYLE" 88 BASE	C,R
29	1	88-C2	"NEW STYLE" 88 BASE	C,R
30	2	9419	RIVET WASHER	
31	6	9465	LOCK WASHER	
OPTIONAL/REPAIR PARTS LIST				
32	0	4FBE	PEDESTAL PIPE - 2.8 FT	R
33	0	678	COUPLING FOR 88 PEDESTAL	R
34	0	88-22	88 ENCLOSURE GASKET	
35	0	88-23	88 PEDESTAL BOLT	
36	0	88-A-LOGO	88 FRONT COVER WITH LOGO	A,C,R
37	0	66S12	1/2" NOZZLE (OLD STYLE)	C,Q
38	0	66S35	NOZZLE CAP (1/2" OLD STYLE)	C

REPAIR KITS		
PART NUMBER	DESCRIPTION	PARTS INCLUDED
X66-HEADSTOCK	HEADSTOCK ASSEMBLY COMPLETE	66S11 HEADSTOCK (1), 66S06 NOZZLE (1), 94-K CAP (1)
X66-PETCOCK	STAINLESS STEEL PETCOCK ASSEMBLY	66S01 BODY (1), 66S08 PACKING NUT O-RING (1), 66S02 NUT (1), 66S03 PLUNGER (1), 66S10 PLUNGER O-RING (1), 66S04 PIN (1), 66S05 NOZZLE (1), 66S22 CAP (1)
X66-TOP SCREW	TOP SCREW ASSEMBLY COMPLETE	66S42 KNOB (1), 66S14 ROD PIN (1), 66S13 STEM (1), 66S15 PACKING NUT (1), 66S07 O-RING (1), 66S16 TOP NUT (1), 66S09 O-RING (1), 418-B SEAT (1), 66S28 SCREW (1)
X66WCRK	#88WC-SS, #66WC, & #66MB REPAIR KIT	418-B BIBB WASHER (1), 66S28 SCREW (1)
X881	ALUMINUM COVER COMPLETE	88-A FRONT COVER (1), 88-B BACK COVER (1), 88-6 RIVET (2), 9419 RIVET (2)
X882	ALUMINUM BASE COMPLETE	88-C1 BASE (1), 88-C2 BASE (1), 88-4 BOLT (4), 9465-88 LOCK WASHER (4), 88-6 NUT (4), 88-14 FLAT WASHER (8)
X883	ALUMINUM COVER AND BASE COMPLETE	88-A FRONT COVER (1), 88-B BACK COVER (1), 88-C1 BASE (1), 88-C2 BASE (1), 88-6 RIVET (2), 88-4 BOLT (6), 9465-88 LOCK WASHER (6), 88-5 NUT (6), 88-14 FLAT WASHER (12), 9419 FLAT WASHER (2)

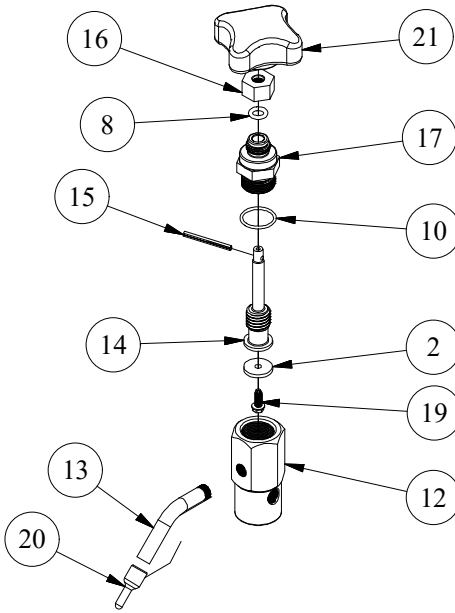
NOTE	DESCRIPTION
A	NOT SHOWN
B	PIPE LENGTH DEPENDENT ON DEPTH OF BURY, SHOWN AS 1'
C	SOLD AS REPLACMENT PART
D	BOLT ASSEMBLY USED ON ALL SIMILAR HOLES/BRACKETS
Q	REPLACEMENT NOZZLE REQUIRES BENDING IN THE FIELD AFTER INSTALLATION
R	POWDER COATING OPTIONS AVAILABLE

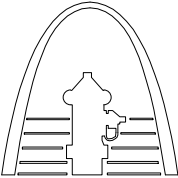


## PETCOCK ASSEMBLY



## HEADSTOCK ASSEMBLY



DRAWN SMS		10/30/2017	 KUPFERLE Since 1857 2511 NORTH 9TH ST. ST. LOUIS, MO 63102 1-800-231-3990	
CHECKED DCL		2/9/2018		
MODIFIED KJW		02/23/2023		
SIZE <b>C</b>	SCALE  1 / 5			
DWG NO  #88WC-SS			SHEET  1 OF 1	REV  2

## LEGEND

- (X) → STANDARD TAG
- (X/Y) → TAG WITH Y QUANTITY

**DISCLAIMER:**  
THIS DRAWING IS THE PROPERTY OF THE KUPFERLE FOUNDRY COMPANY. IT IS NOT TO BE USED OR DUPLICATED WITHOUT THE PERMISSION OF THE OWNER.