

# STEEL DAVIT CRANE

Individually tested and certified at 125% W.L.L

OZ500DAV, OZ1000DAV, OZ2500DAV



**500 lbs., 1000 lbs.  
and 2500 lbs. Capacity**

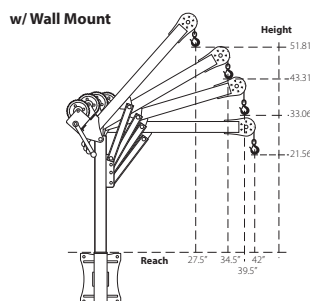
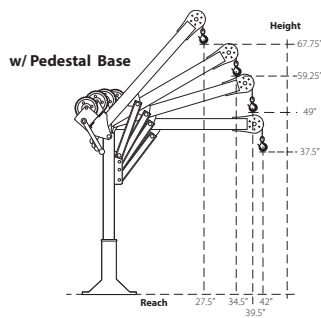
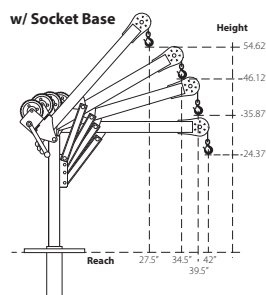
## Features

- 360 degree rotation
- 4 different boom height adjustments
- 500, 1000, and 2500 lb. ratings available
- Manual Din rated CE winch with brake (Includes power drill adaptor)
- Corrosion Resistant Zinc plated finish
- Headache Ball (OZHB10) available and sold separately
- Carrying case (OZRB1) available and sold separately



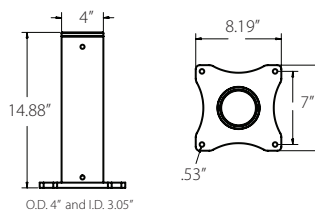
OZ1000DAV shown with optional  
OZPED2 Pedestal base and  
OZGAL.25-55B wire rope assembly  
Bases and cable assemblies sold separately

## OZ500DAV DIMENSIONS

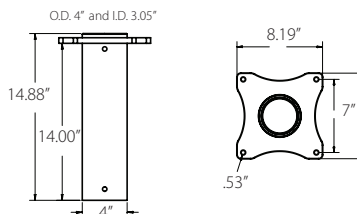


**OZ500DAV BASES** (sold separately) Comes with mounting template.

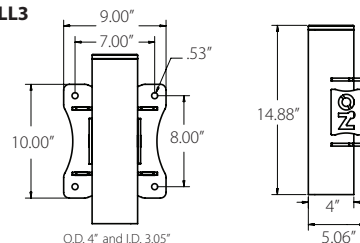
### OZPED3



### OZSOC3



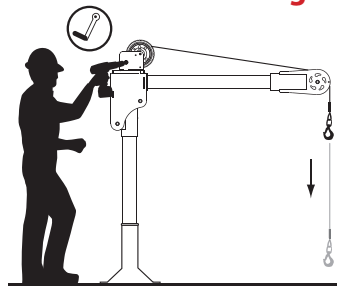
### OZWALL3



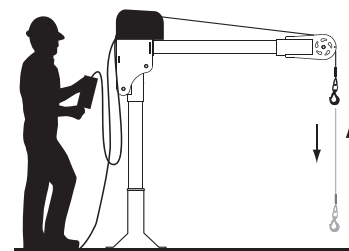
Dimensions and illustrations are for reference only and subject to change without notice.



**Options for faster  
lowering and raising**



Detach winch handle for drill option



AC and DC power winches available  
See page 25

## Weight

Weight (excluding winch)	Boom	Mast	Net
OZ500DAV (lbs)	27	23	50
OZ1000DAV (lbs)	35	29	64
OZ2500DAV (lbs)	130	64	194

## OZ500DAV & OZ1000DAV

Manual winch: 3/16" - 80 ft max. lift length • 1/4" - 55ft max. lift length

AC/DC Electric Winch: 3/16" - 90 ft max. lift length • 1/4" - 45ft max. lift length

## OZ2500DAV

Manual winch: 1/4" Synthetic - 75 ft max. lift length • 5/16" Ultrex - 55ft max. lift length • 3/8" Synthetic - 45ft max. lift length

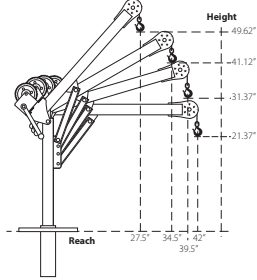
## Load Ratings

\*OZ500DAV based on 3/16" wire & synthetic rope

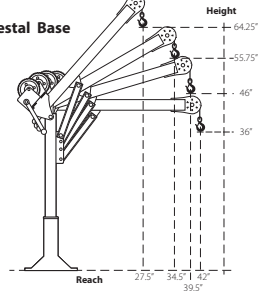
1st. Layer	500 lbs
Mid. Drum	500 lbs
Full Drum	500 lbs

## OZ1000DAV DIMENSIONS

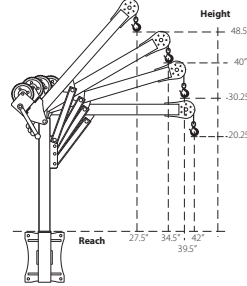
w/ Socket Base



w/ Pedestal Base



w/ Wall Mount



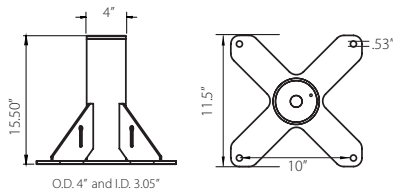
## Load Ratings

\*OZ1000DAV based on 1/4" wire & 3/16" Ultrex synthetic rope

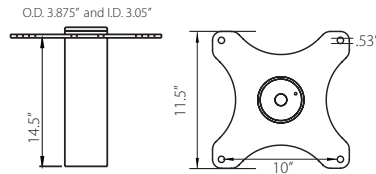
1st. Layer	1000 lbs
Mid. Drum	875 lbs
Full Drum	550 lbs

**OZ1000DAV BASES** (sold separately) \*Base inside diameter 3.0" • Comes with mounting template.

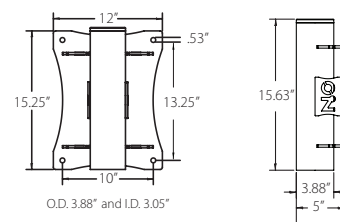
OZPED2



OZSOC2



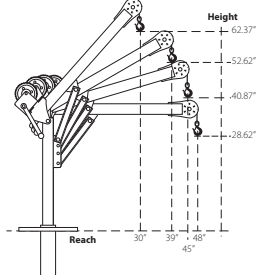
OZWALL2



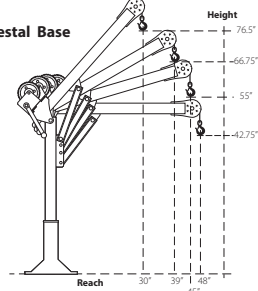
Dimensions and illustrations are for reference only and subject to change without notice.

## OZ2500DAV DIMENSIONS

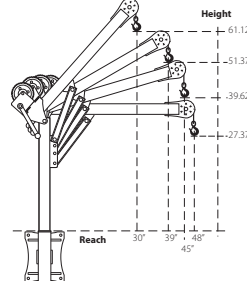
w/ Socket Base



w/ Pedestal Base



w/ Wall Mount



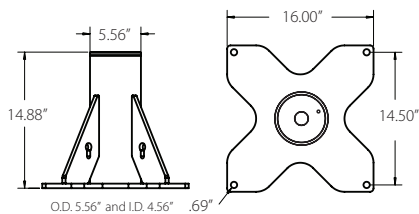
## Load Ratings

\*OZ2500DAV based on 3/8" synthetic rope

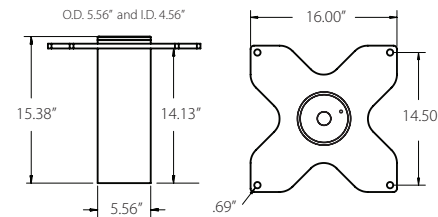
1st. Layer	2500 lbs
Mid. Drum	2000 lbs
Full Drum	1550 lbs

**OZ2500DAV BASES** (sold separately) \*Base inside diameter 4.5" • Comes with mounting template.

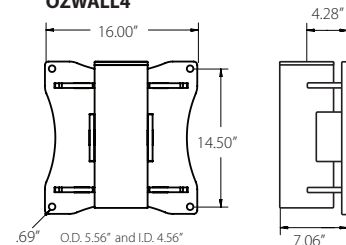
OZPED4



OZSOC4



OZWALL4



Dimensions and illustrations are for reference only and subject to change without notice.



# WIRE/SYNTHETIC ROPE ASSEMBLIES

## Steel Wire Rope (For manual winch)

OZGAL.19-80B	3/16" x 80'	Galvanized cable assembly
OZSS.19-80B	3/16" x 80'	Stainless steel cable assembly
OZGAL.25-55B	1/4" x 55'	Galvanized cable assembly
OZSS.25-55B	1/4" x 55'	Stainless steel cable assembly

Above cable assemblies come with swaged ball and swivel hook with latch.

**Custom cable length available.**

3/16" - 80 ft max. length • 1/4" - 55ft max. length

## Steel Wire Rope (For manual and power winch)

OZGAL.19-90	3/16" x 90'	Galvanized cable assembly
OZSS.19-90	3/16" x 90'	Stainless Steel cable assembly
OZGAL.25-45	1/4" x 45'	Galvanized cable assembly
OZSS.25-45	1/4" x 45'	Stainless Steel cable assembly

All cable assemblies come with a swivel hook with latch.

**Custom cable length available.**

3/16" - 90 ft max. length • 1/4" - 45ft max. length

## Synthetic Rope

OZSR.19-15	3/16" x 15'	Ultrex Synthetic Rope
OZSR.19-50	3/16" x 50'	Ultrex Synthetic Rope
OZSR.19-90	3/16" x 90'	Ultrex Synthetic Rope
OZSR.25-50	1/4" x 50'	Ultrex Synthetic Rope
OZSR.25-75	1/4" x 75'	Ultrex Synthetic Rope
OZSR.31-55	5/16" x 55'	Ultrex Synthetic Rope
OZSR.38-45	3/8" x 45'	Ultrex Synthetic Rope

All synthetic rope assemblies come with looped ends and pre-installed swivel hook with latch



## HEADACHE BALL

OZHB10

Keeps your wire rope tensioned even when lowering the hook with no load. Compatible with 3/16" and 1/4" wire rope assemblies. Headache balls sold separately from all davit cranes and wire rope assemblies.



**WARNING**  
**CANCER AND REPRODUCTIVE HARM**  
 Some products may contain chemicals known to the state of California to cause cancer, or birth defect or reproductive harm.  
[www.P65Warning.ca.gov](http://www.P65Warning.ca.gov)



## DAVIT CRANE COVER

OZDAV-C1

Protect your davit crane from the elements with this waterproof cover. Compatible with all OZ Lifting Products davit cranes 1200 lbs. capacity or less excluding the XR series.



**COMING SOON**



\*Optional floor anchoring system

## PORTABLE DAVIT BASE

For all OZ Lifting davit cranes up to 1200 lbs capacity

- Optional floor anchoring system allows the davit to rotate while under load (when base is not anchored the davit must remain in a forward position when lifting)
- Oversized casters make rolling the base and moving loads easy
- Compatible with all OZ lifting davit cranes up to 1200 lbs capacity
- Durable steel construction with powder coat finish
- Davit crane sold separately
- Patent pending

