

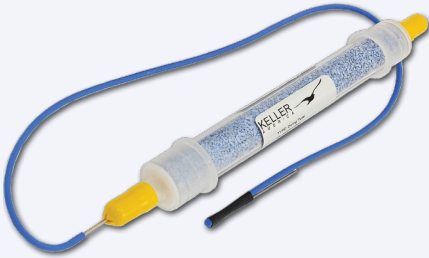


ACCESSORIES FOR KELLER TRANSMITTERS

SIMPLIFY INSTALLATION AND PROTECT YOUR INVESTMENT

OPTIONAL ACCESSORIES

KELLER America offers a variety of optional accessories designed to enhance versatility, simplify the installation, and increase the longevity of your KELLER pressure or level transmitters. If you have any questions, or would like to discuss your particular application in more detail, contact KELLER America today!



Drying Tube Assembly

Clear tube filled with indicating desiccant that attaches directly to cable vent tube to intercept water vapor. Highly recommended when operating in high humidity conditions. Must be periodically renewed as desiccant becomes saturated, turning color from blue (dry) to pink (saturated).



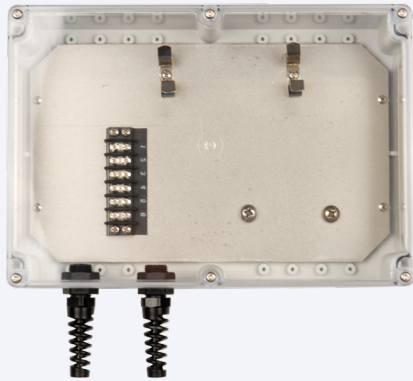
Sour Gas Trap

Effectively prevents any H₂S vapor from migrating down the atmospheric vent of the level transmitter, on account of its ability to absorb and trap any such vapors which enter it. The Sour Gas Trap is intended to be installed either stand-alone or in tandem with a KELLER America Drying Tube.



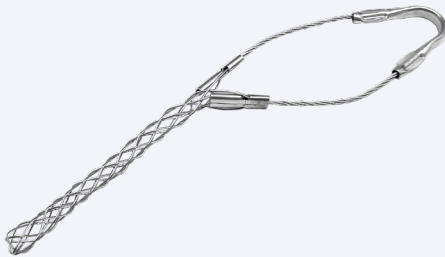
Bellows Assembly

Alternative to the drying tube, this aneroid bellows attaches to cable vent tube and requires no periodic maintenance. Note that the use of the bellows results in a closed reference pressure system subject to zero shift errors induced by changing temperatures of up to 0.0004 psi/°C. Not recommended for use with accuracy requirements of ±0.25% FS or better, or ranges < 2 psi.



Termination Enclosure

Convenient option complementing gauge-type pressure/level transmitters where it is desired to terminate the transmitter cable close to the measurement point. It includes a NEMA 4X clear front enclosure (7.9 X 4.7 X 3.5 inches) with two, liquid-tight cable fittings (one in, one out), a terminal strip, and provisions for mounting both a drying tube or bellows assembly, each sold separately.



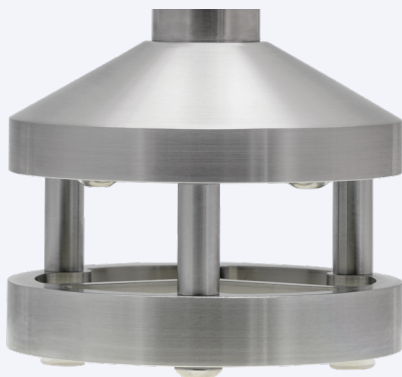
Cable Hanger

Single eye mesh cord grip style cable hanger for use with KELLER's 0.230 inch O.D. cables, including PE, Hytrel, and Tefzel, used on Acculevel, Digilevel, Levelgage, LevelRat, Microlevel, and Nanolevel submersible level transmitters, and KELLER's Valueline and Preciseline pressure transmitters.



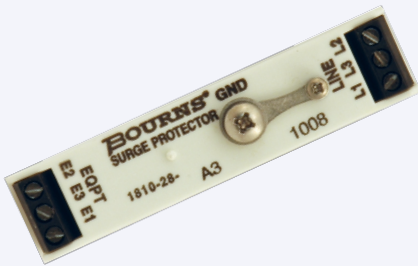
Stabilizing Weight

Zinc prop shaft anode adapted to fit Ø21 mm O.D. of Levelgage, Acculevel, and LevelRat submersible level transmitters. Aids in corrosion resistance as well as helps ensure that the cable remains taut in turbulent conditions.



Protective Spacer

Designed specifically for the KELLER's LevelRat wastewater level transmitter, the protective spacer anchors the LevelRat in place while positioning the sensing diaphragm off the bottom to avoid false readings caused by sludge and debris.



External Surge Protector

Recommended for lightning/surge protection of user's power supply/read-out/PLC, etc. To be used in conjunction with Levelgage, Acculevel, Level-Rat, Microlevel, Valueline, or Preciseline transmitters.



Pressure Test Adapters

These custom built assemblies are designed to facilitate calibration and maintenance testing. Versions are available to connect the Acculevel, Levelgage, LevelRat, and Microlevel to a pressure calibrator.



RS-485 Converter/Cable

For the user who wishes to communicate with their KELLER level or pressure transmitters via the RS-485 digital interface. Available in RS-232 (serial port), USB, and bluetooth versions, along with cable adapters, as needed, and CCS30 Software (also available for download, free of charge from www.kelleramerica.com). Consult factory for details.



Digital Display / Process Controller

The Trident series of displays/controllers by Precision Digital are ideally suited for use with KELLER level and pressure transmitters. Various configurations ensure the right fit for your application.



Titanium Construction

Optional material for the Acculevel and Preciseline transmitters, and is highly recommended for brackish and sea water applications.



Electrical Connectors

KELLER offers pressure transmitters with an array of electrical connectors. The Econoline options include mPm393 and M12 connectors. Valueline and Preciseline options include mPm393, DIN43650, and MIL-C 26482. The mPm393 and DIN43650 incorporate screw terminals, while the MIL-C 26482 mating connectors feature solder cups.



1/2" NPT Pipe Conduit Fitting

1/2" NPT male fitting, allows rigid mounting to 1/2" conduit for Levelgage, Acculevel, Digilevel, or LevelRat submersible transmitters. It can also be added to our Preciseline and Valueline pressure transmitters.



Optional Cable Jacket Materials

Hytel and Tefzel (ETFE) jacketed submersible cable for use on Acculevel, Levelgage, LevelRat, Microlevel, Nanolevel, Digilevel, Preciseline and Valueline transmitters. Hytel provides the greatest resistance to swelling in hydrocarbons. Tefzel provides the greatest protection from chemical attack.